

±1°

Glass 16,76-21,52

Wedge and rubber set for glass ref. PL-14

Base shoe profile fascia-mount ref. SV-1403

Screed 30,0 N/mm²

Finished floor

FFL

Max. 1100

107

64

132

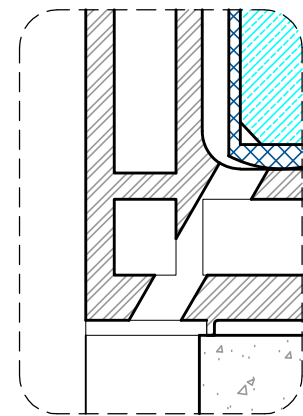
25

Max. 15

Anchor bolts FBN II M12 L116 or similar

Uncracked concrete C25/30

Min. 80



Detail A. Drainage
Scale 1:4

KEY:

	Glass
	Aluminium
	Nylon Polyamide
	PVC
	EPDM
	Concrete
	Mortar
	Finished floor

Note:
PL-14 is a set of spacers, wedges and gaskets.

Finished floor level

All dimensions are showed in milimeters (mm)

Due to the broad diversity of materials existing on the market and the different application methods outside of our control, we recommend in any case to do physical tests and sufficient controls to ensure the suitability of the product in each specific application. It is the responsibility of the user to establish the suitability of the information provided with their particular use of the product.

It is prohibited to make total or partial reproductions, as well as copies, without the written authorisation of Comenza.
COPYRIGHT: COMENZA SL (2016)

Scale:	1:2	Format:	UNE A-3	System	GlassFit SV-1403 Top F
Author:	Technical office			Model:	COMENZA_GlassFit SV-1403 Top F_Without handrail_R0_M
Date:	01/09/2016			Plan:	General details
Customer:	N/A				
Project:	N/A				



comenza
Railing Passion

Nº Plan
1 / 1